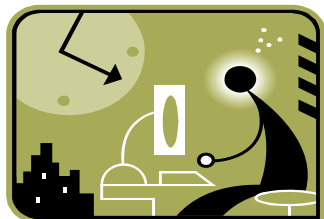


IPFW HELMKE LIBRARY

Science Information Center



Library Workshops: Mark your calendars!

Secrets of the Searchmaster

April 21, 12:00-1:20
Helmke Library room
LB 440A

Attend this workshop to discover new strategies and techniques to help you dive into the rich resources available in the deep end of the World Wide Web.

training.lib.ipfw.edu

How to Set Up a Search Alert

April 20, 3:00-4:00 OR
April 21, 10:00-11:20
Helmke Library room
LB 440A

Learn how to set up alerts through the library's database providers to gather articles of interest in less time.

training.lib.ipfw.edu

CURRENT AWARENESS

A STRATEGY FOR DISCOVERING INFORMATION
IN YOUR FIELD

What is current awareness? It's a strategy for keeping up to date on new research in your field by setting automatic search alerts in databases.

What are search alerts? They are tools that send you an e-mail message that notifies you of newly published articles that match your saved search. Also, when someone cites a particular article or when a journal's table of contents is available to be viewed.

Which databases have alerts? IEEE Xplore, Compendex, Science Citation Index, and Academic Search Premier, to name only a few. Most databases offer this capability.

How do you set up alerts? Attend the workshop (see side panel) on April 20th or 21st at the library or contact me.

IPFW NOW LINKED IN GOOGLE SCHOLAR!

If you are a Google Scholar user, you can now set your preferences to provide linking to IPFW holdings through **IU-Link**. To set your preferences, go to <http://scholar.google.com>, then select "Scholar Preferences" just to the right of the search box. Towards the middle of the preferences page, the Library Links section allows you to search for a library. Type Indiana to see a list of libraries, then check IPFW and then click on "Save Preferences."

Your computer will then include the **IU-Link** as text (not the image used in databases) with Google Scholar results. Select this link to then check IPFW holdings for the journal or book.

ONLINE REFERENCE TRIALS THROUGH APRIL 30

Check out the online reference collections being offered on a trial basis right now. These are available under "Databases & Indexes" → "Trial Databases" or at <http://www.lib.ipfw.edu/768.0.html>

These vary in format, with some providing references to encyclopedia entries and others providing full-text electronic versions of print references from various publishers. We believe this is the future of ready reference.



E-JOURNAL FINDER

What is E-Journal Finder? It tells you which library databases a particular journal is available full-text online.

Why use E-Journal Finder? It helps you locate more than 200,000 electronic journals offered by Helmke Library.

Why is E-Journal Finder more accurate to use than IUCAT for finding electronic journals? IUCAT records do not always tell you if a journal is available electronically. If Helmke Library receives a print and an electronic subscription to a journal, the electronic access information does not always appear in IUCAT.

FACULTY PUBLICATIONS

The library regularly purchases copies of faculty-authored books and adds these to the special collections and to the general collections. Please notify me about new publications.

DO YOU HAVE A PATENT? BE PART OF MY PATENT DISPLAY

In early fall I will be doing a display on patents for a display case at Helmke Library. I would like to showcase inventions by IPFW faculty. So, please send me your patent numbers and if possible the actual invention. The display case is always locked and I will return the invention afterwards.

If you have any questions, please contact me.



WISH LIST

I am currently building a wish list of journals and databases. Please send your department's library liaison a list of journals and databases you would like added to Helmke Library's holdings. There is no guarantee that the items will be purchased, but in the event that additional funds or cancellations occur I may be able to lobby for a new journal or database.

Jessica Patterson, Reference & Information Services Librarian, pattersj@ipfw.edu, x16513